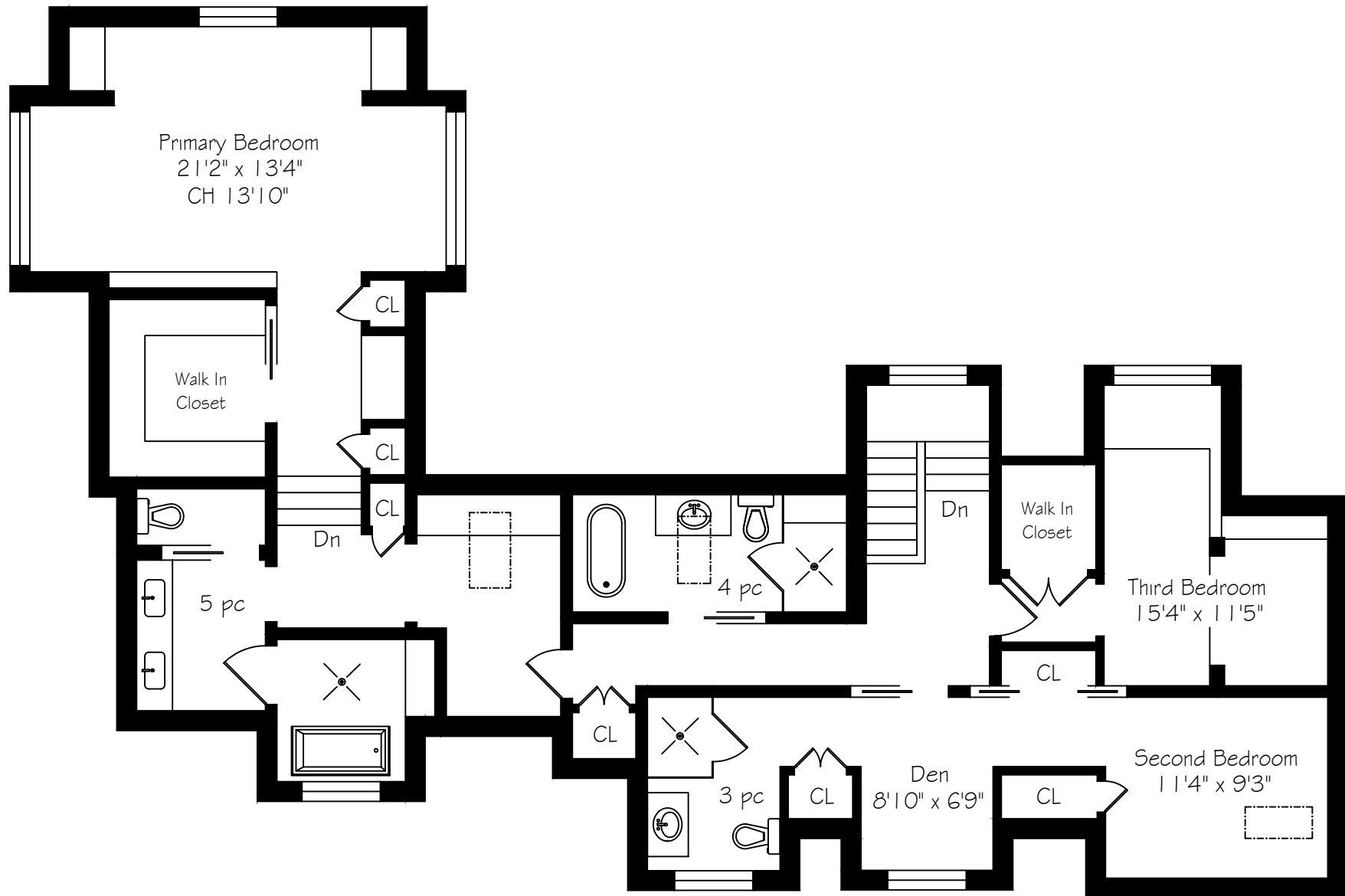


This floor plan shows a single-story house with the following rooms and features:

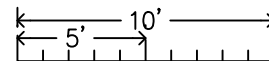
- Garage:** 26'2" x 19'11"
- Family Room:** 21'4" x 16'11", featuring a fireplace.
- Mudroom:** 8'2" x 5'9", with three closets (CL).
- Breakfast Area:** 19'0" x 14'3", featuring a fireplace.
- Kitchen:** 19'0" x 13'4", featuring a fireplace.
- Dining Room:** 21'10" x 11'2"
- Living Room:** 22'10" x 15'10", featuring a fireplace.
- Foyer:** 18'7" x 12'1", featuring a fireplace.
- Bathroom:** 2 pc (two-piece).
- Stairs:** Up and Down (Dn) stairs are located near the foyer.
- Closets:** In addition to the three in the mudroom, there are two more closets (CL) in the foyer area.

Measurements and Calculations are approximate
To be used as guidelines only
www.measuredup.ca

243 Alscot Crescent

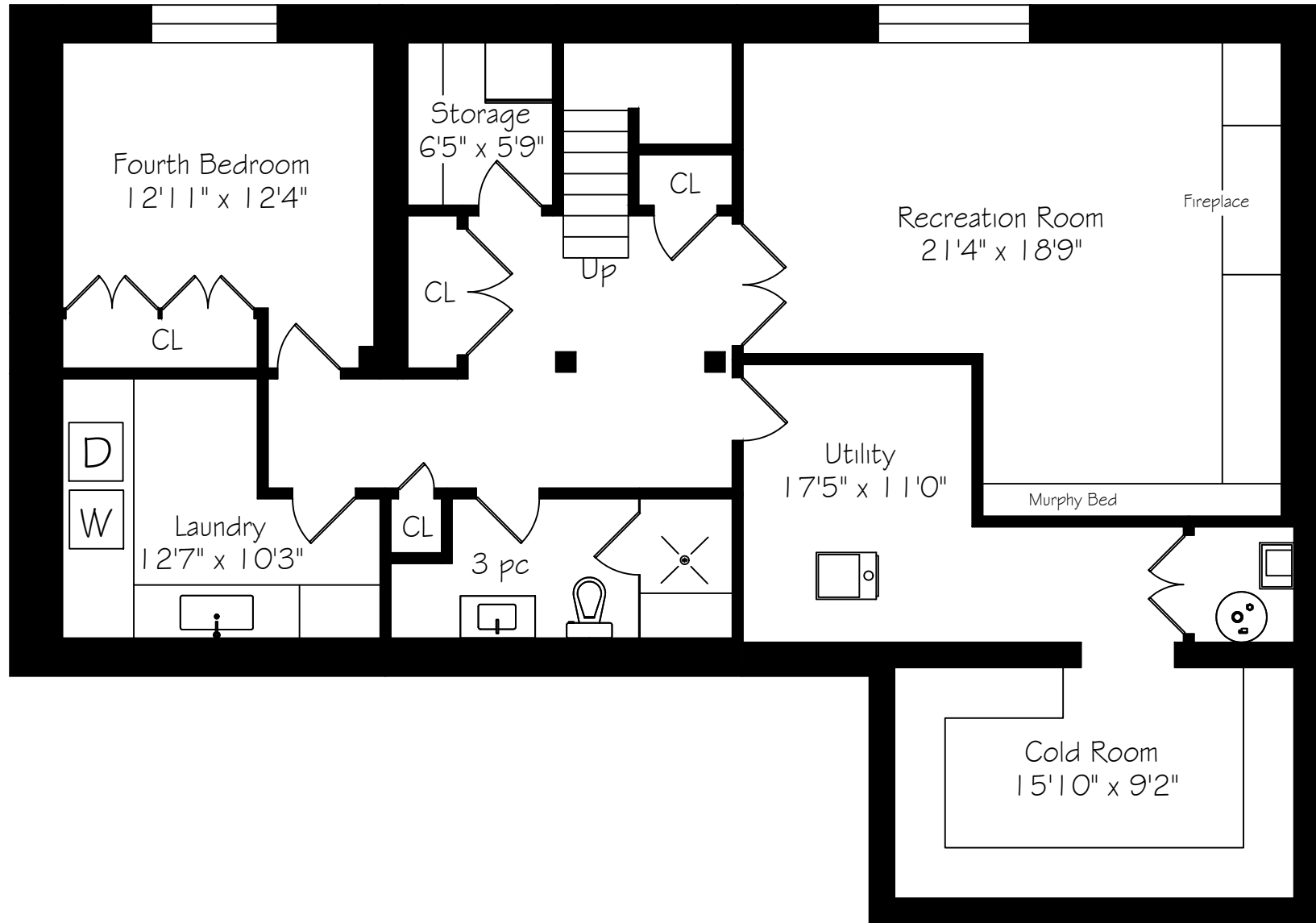


Second Floor
1711 Square Feet

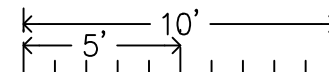


Measurements and Calculations are approximate
To be used as guidelines only
www.measuredup.ca

243 Alscot Crescent



Lower Level
1550 Square Feet



Measurements and Calculations are approximate
To be used as guidelines only
www.measuredup.ca